



# GAT MONTHLY MEMBERSHIP PROGRESS REPORT

Results as of: 5/31/2022

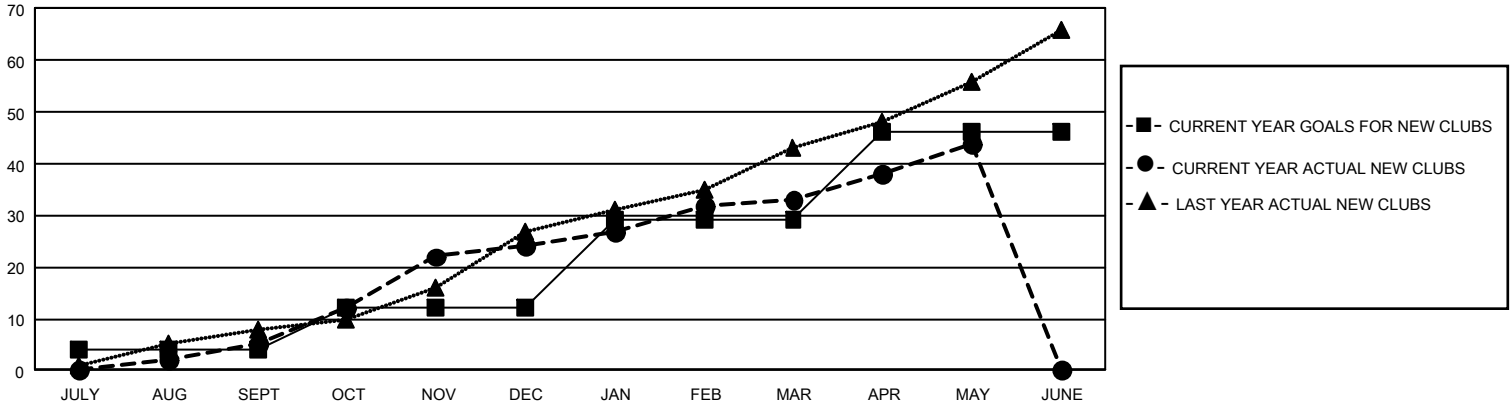
## GAT Constitutional Area 7

REPORT DOES NOT INCLUDE CLUBS IN UNDISTRICTED AREAS.

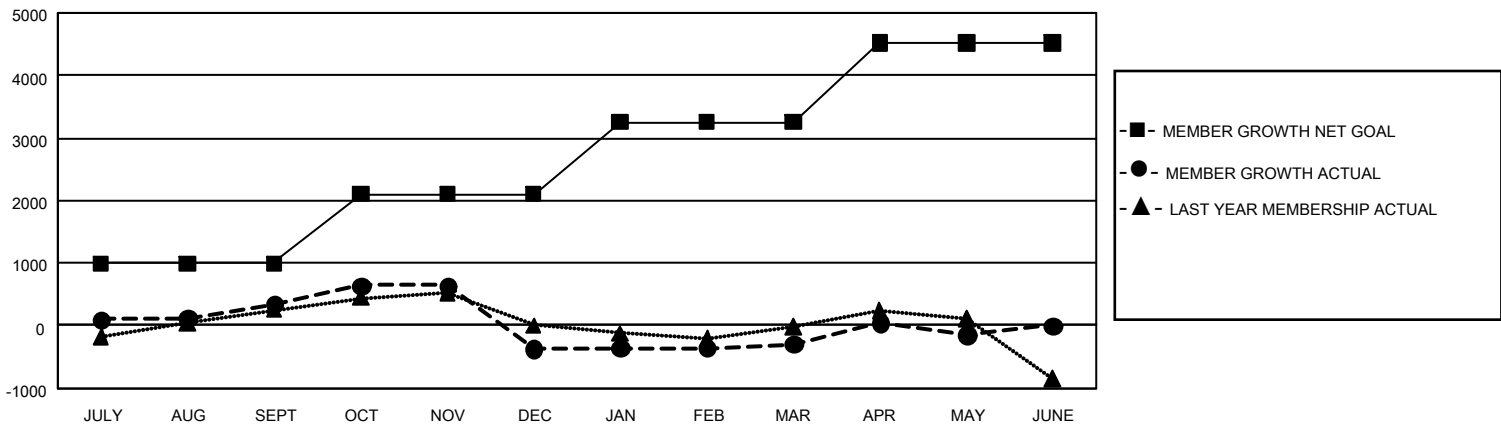
Clubs			
RESULTS FOR 2021-2022			
QUARTER	NEW CLUB GOAL	NEW CLUBS	DROPPED CLUBS
JULY/AUG/SEPT	12	5	30
OCT/NOV/DEC	24	19	9
JAN/FEB/MAR	51	9	15
APR/MAY/JUNE	51	11	2

Members			
RESULTS FOR 2021-2022			
QUARTER	MEMBER GROWTH NET GOAL	MEMBER GROWTH ACTUAL	DROPPED MEMBERS ACTUAL (including transfers)
JULY/AUG/SEPT	996	1,502	1,003
OCT/NOV/DEC	1105	1,576	2,165
JAN/FEB/MAR	1149	1,255	1,032
APR/MAY/JUNE	1270	1,335	1,067

GOALS AND ACTUAL NEW CLUBS CUMULATIVE



GOALS AND ACTUAL MEMBERS CUMULATIVE



DROPPED CLUBS: 56	
<b>DROPPED MEMBERS</b>	
DECEASED	470
CLUB CANCELLED	157
OTHER	4,640
<b>TOTAL</b>	<b>5,267</b>

1,155 CLUBS OF 1,906 ADDED 1 OR MORE NEW MEMBERS

[CLICK HERE FOR CUMULATIVE MEMBERSHIP DATA](#)

GENDER DISTRIBUTION	
MALE	25,173 (58.63%)
FEMALE	17,760 (41.36%)
NON BINARY	2 (0.00%)
PREFER NOT TO ANSWER	2 (0.00%)
<b>TOTAL FAMILY UNIT MEMBERS</b>	<b>7,277</b>
<b>FAMILY MEMBERS PAYING HALF DUES</b>	<b>3,915</b>